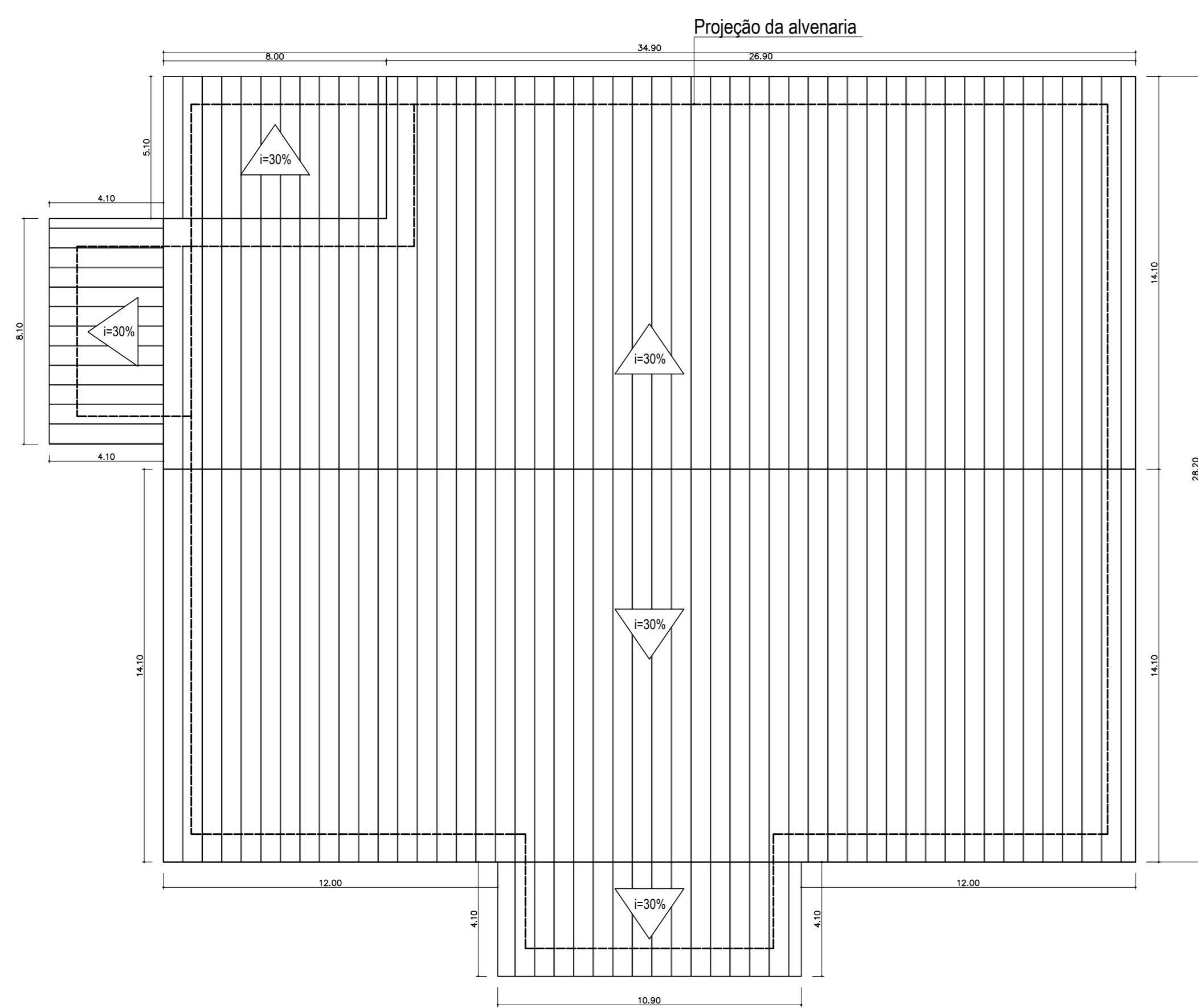


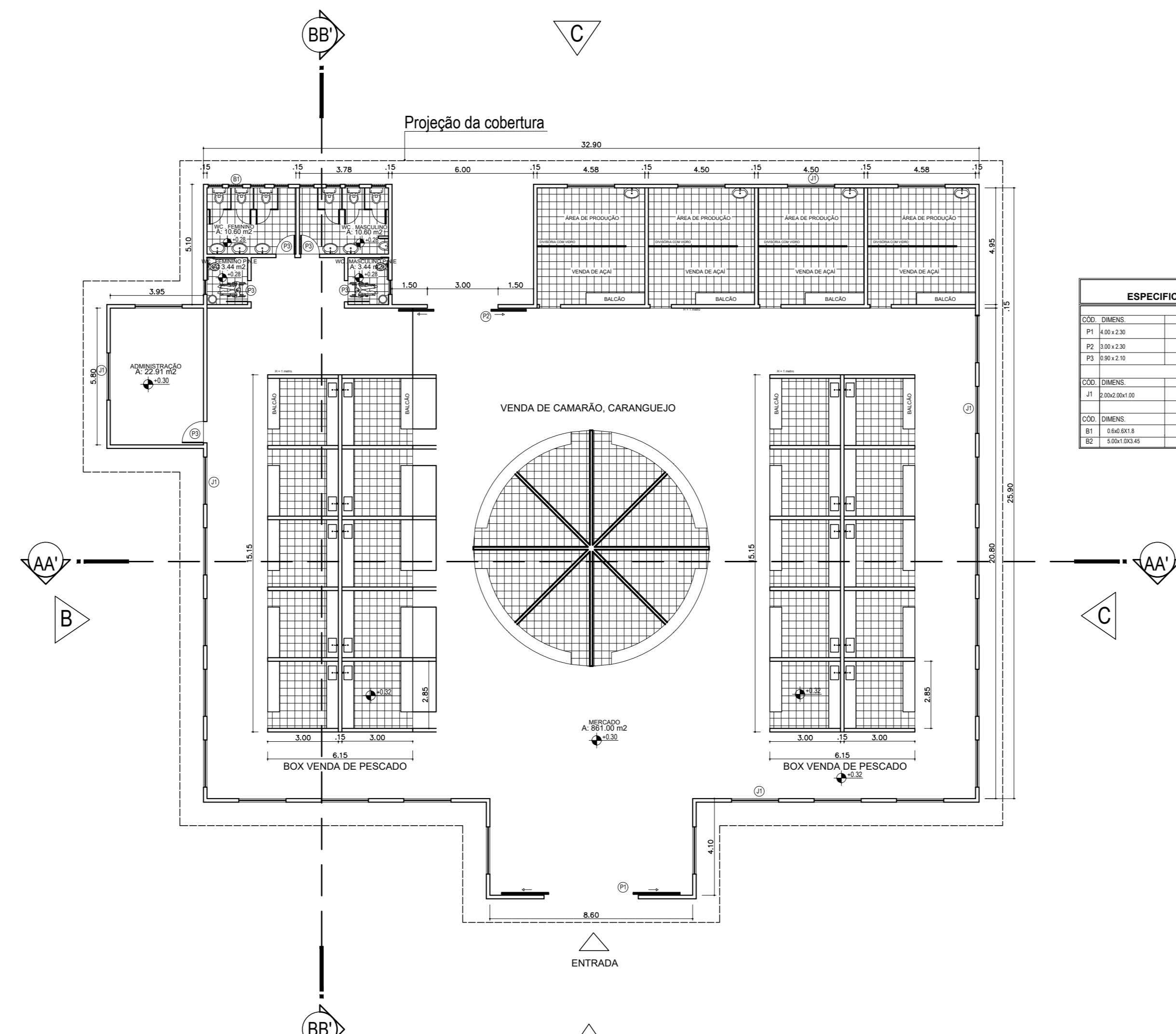
LEGENDA

1	MERCADO	Poste de iluminação	Poste de iluminação
2	RESTAURANTES	Árvore porte médio	Árvore porte médio
3	SORVETERIAS	Areia	Areia
4	BARRACAS DA FEIRA	Bancos	Bancos
5	BARRACAS DE ARTESANATO	Pav. Sextavado	Pav. Sextavado
6	BATERIA DE BANHEIROS	Grama	Grama
7	ATRACADOURO	Bancos de concreto	Bancos de concreto
8	PRAÇA	Bicicletário	Bicicletário
9	DECK DE MADEIRA	Brinquedos	Brinquedos

<b>UNIVERSIDADE FEDERAL DO AMAPÁ</b> ARQUITETURA E URBANISMO			
Documento: TRABALHO DE CONCLUSÃO DE CURSO			
Autor: Fabiana Nascimento de Jesus			
Orientador: Gêssica Nogueira dos Santos			
Projeto: Complexo Pavão			
Conteúdo: IMPLANTAÇÃO/ SITUAÇÃO		Folha: 01 / 03	
Área: Área do lote: 15.419,00 m <sup>2</sup>	Projeto: AUTOR (A)		
Data: 24 de janeiro de 2016	Escala: 1:200		



PLANTA DE COBERTURA  
Escala 1/150



PLANTA BAIXA  
Escala 1/150

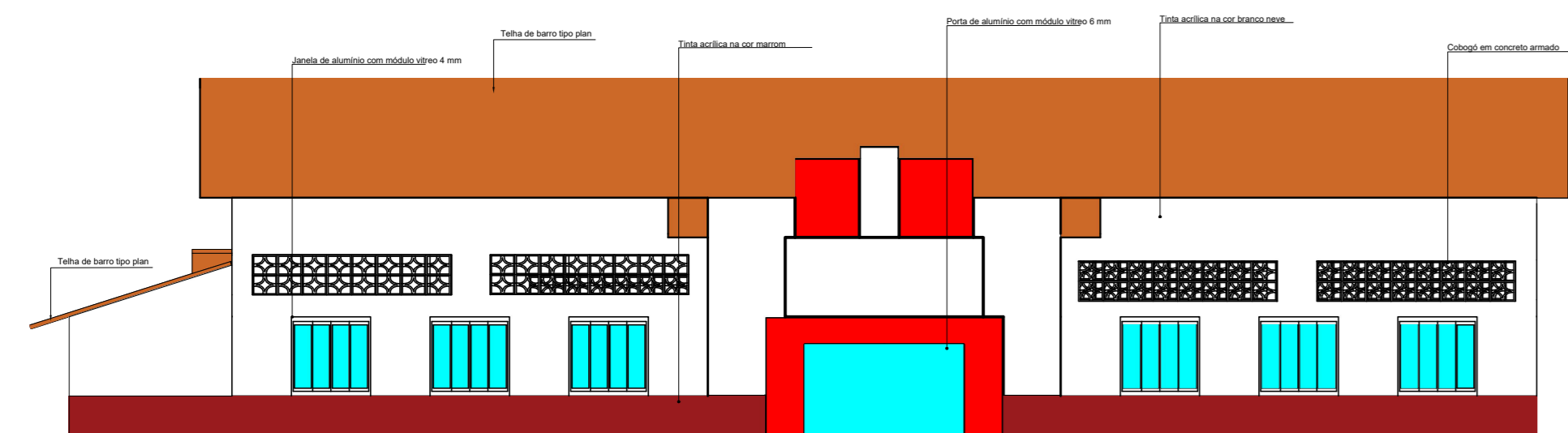
MERCADO	
ESPECIFICAÇÕES GERAIS: ESQUADRIAS	
001	PORTAS
002	01010101
003	01010102
004	01010103
005	01010104
006	01010105
007	01010106
008	01010107
009	01010108
010	01010109
011	01010110
012	01010111
013	01010112
014	01010113
015	01010114
016	01010115
017	01010116
018	01010117
019	01010118
020	01010119
021	01010120
022	01010121
023	01010122
024	01010123
025	01010124
026	01010125
027	01010126
028	01010127
029	01010128
030	01010129
031	01010130
032	01010131
033	01010132
034	01010133
035	01010134
036	01010135
037	01010136
038	01010137
039	01010138
040	01010139
041	01010140
042	01010141
043	01010142
044	01010143
045	01010144
046	01010145
047	01010146
048	01010147
049	01010148
050	01010149
051	01010150
052	01010151
053	01010152
054	01010153
055	01010154
056	01010155
057	01010156
058	01010157
059	01010158
060	01010159
061	01010160
062	01010161
063	01010162
064	01010163
065	01010164
066	01010165
067	01010166
068	01010167
069	01010168
070	01010169
071	01010170
072	01010171
073	01010172
074	01010173
075	01010174
076	01010175
077	01010176
078	01010177
079	01010178
080	01010179
081	01010180
082	01010181
083	01010182
084	01010183
085	01010184
086	01010185
087	01010186
088	01010187
089	01010188
090	01010189
091	01010190
092	01010191
093	01010192
094	01010193
095	01010194
096	01010195
097	01010196
098	01010197
099	01010198
100	01010199



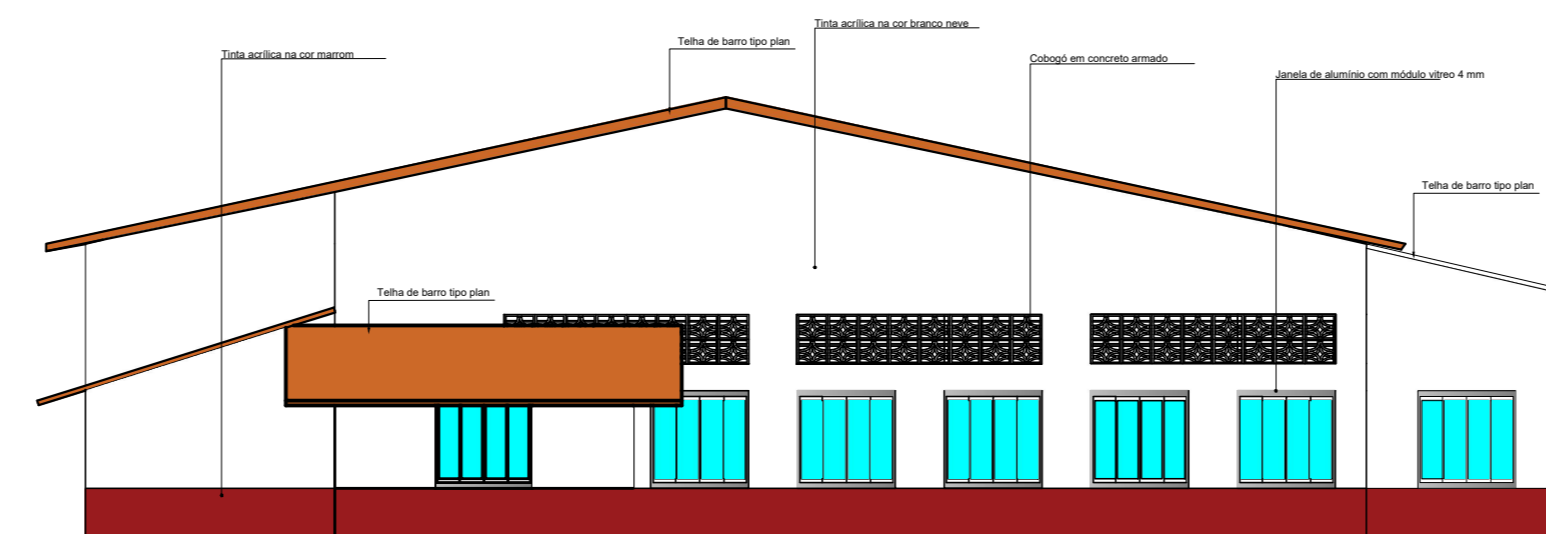
VISTAS DA FACHADA NORTE



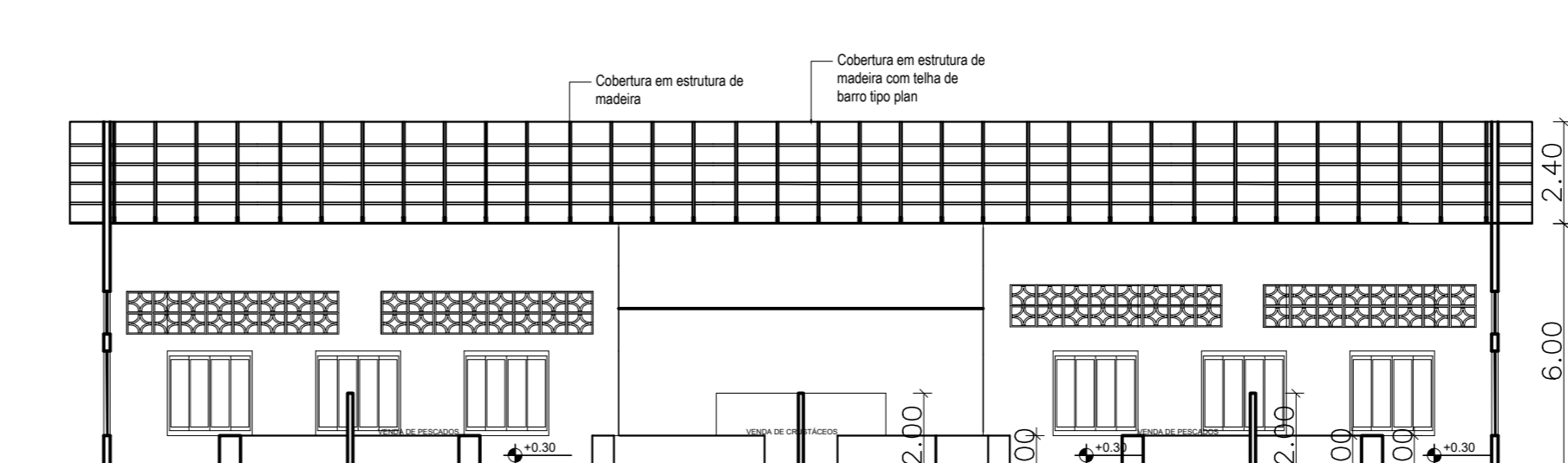
VISTAS INTERNAS



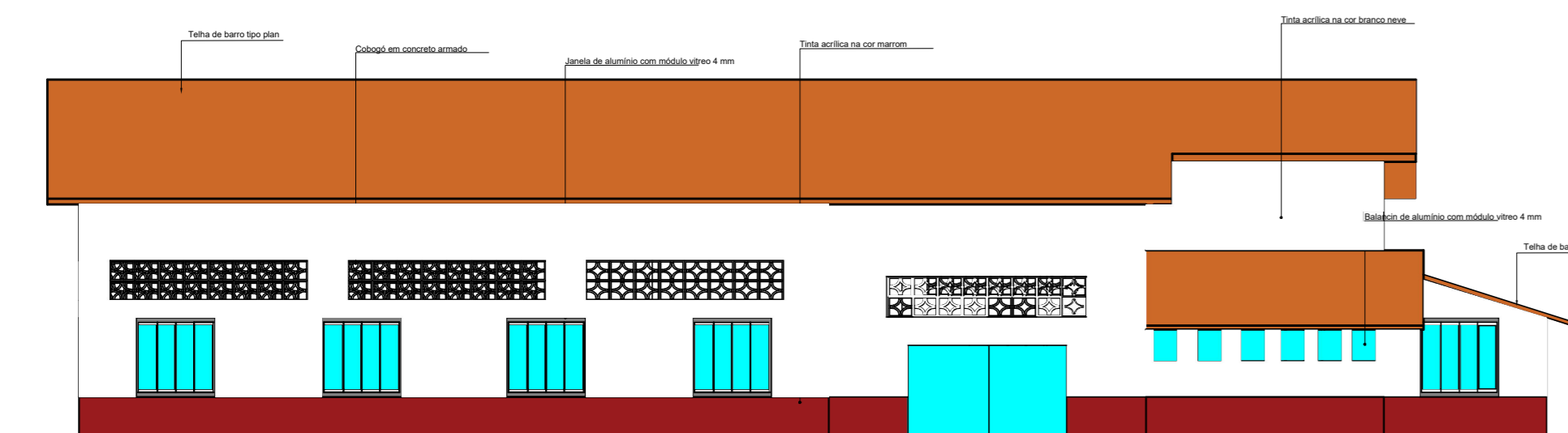
ELEVAÇÃO A  
Escala 1/150



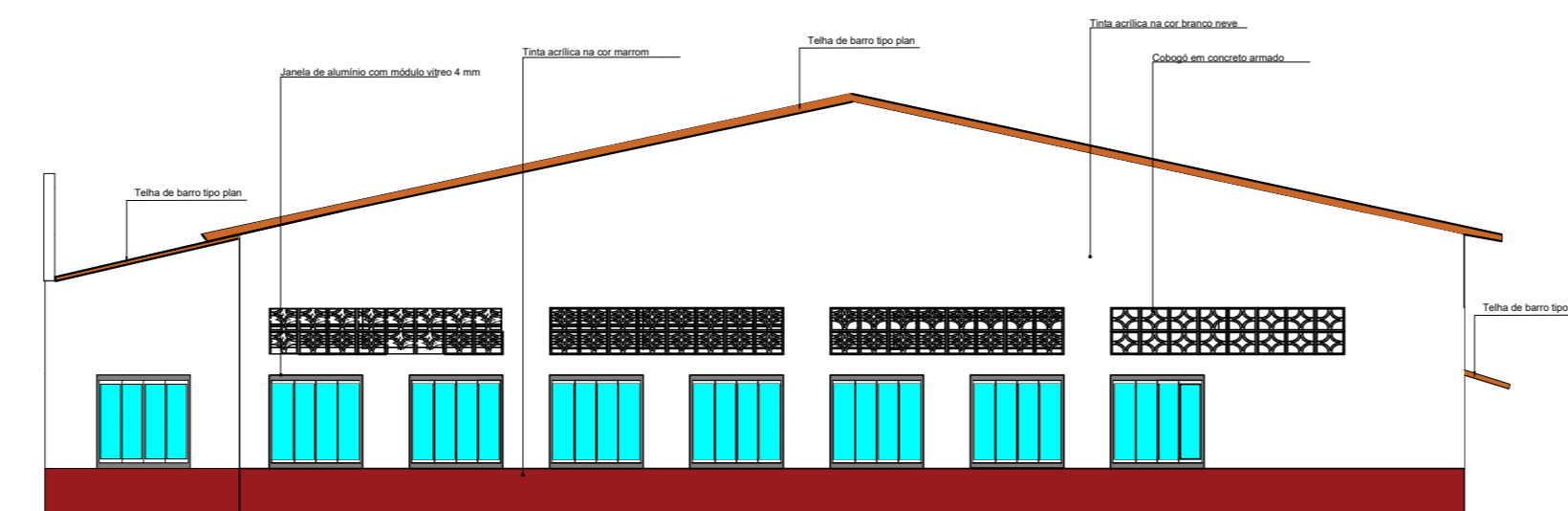
ELEVAÇÃO B  
Escala 1/150



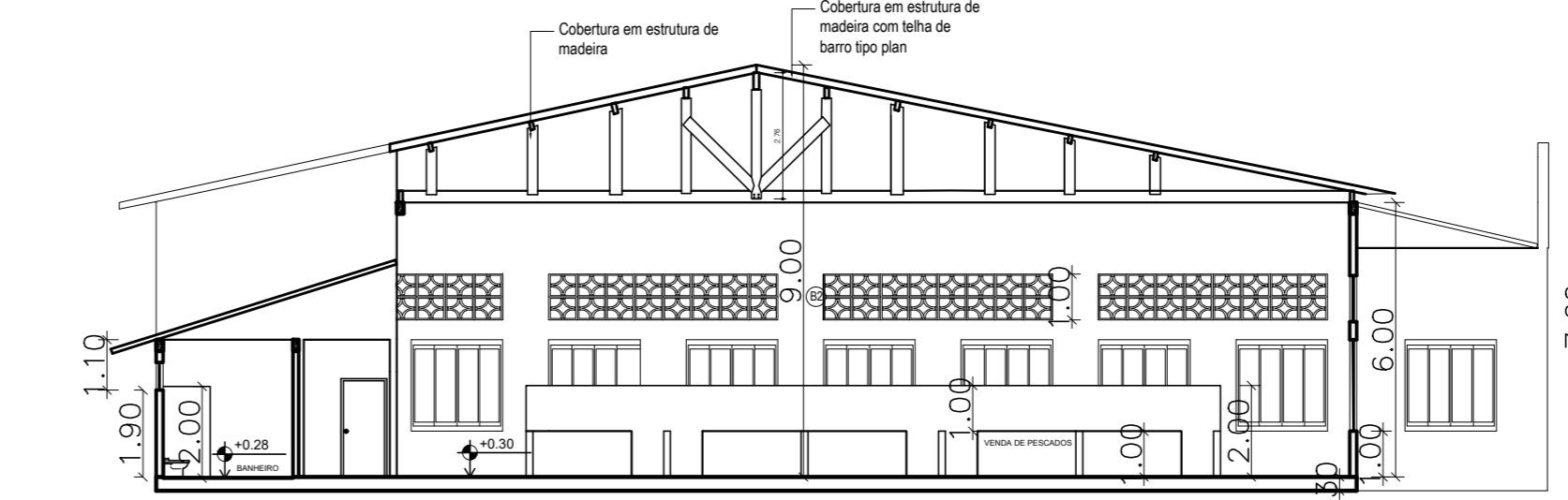
CORTE AA'  
Escala 1/150



ELEVAÇÃO C  
Escala 1/150

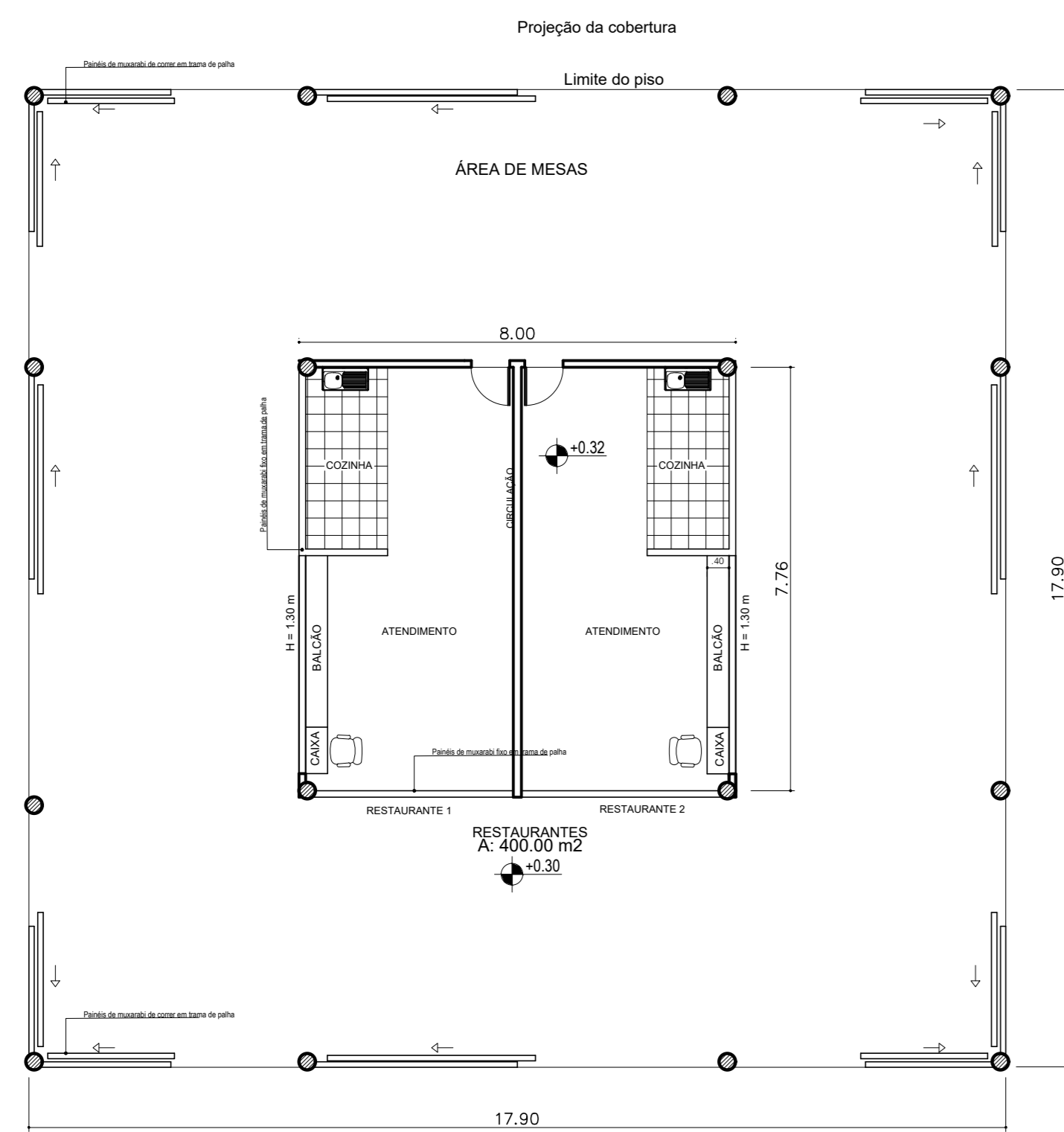


ELEVAÇÃO D  
Escala 1/150

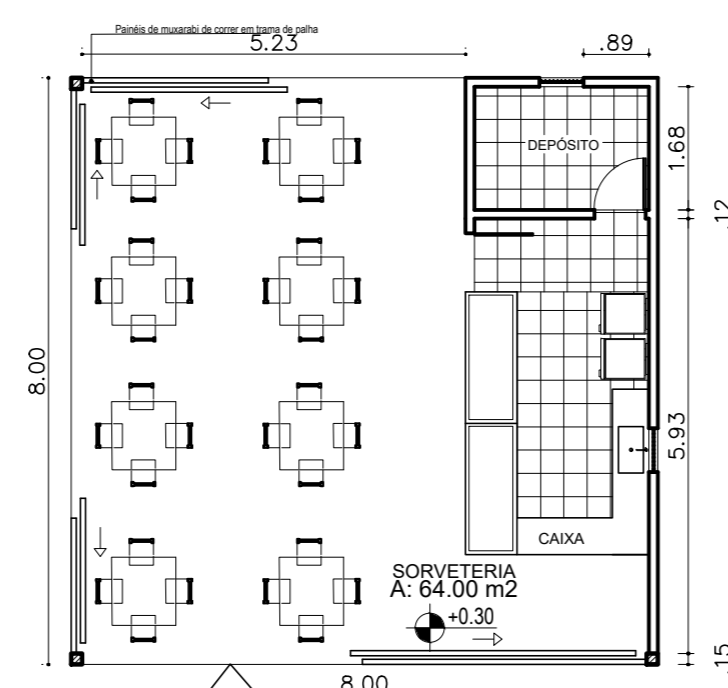


CORTE BB'  
Escala 1/150

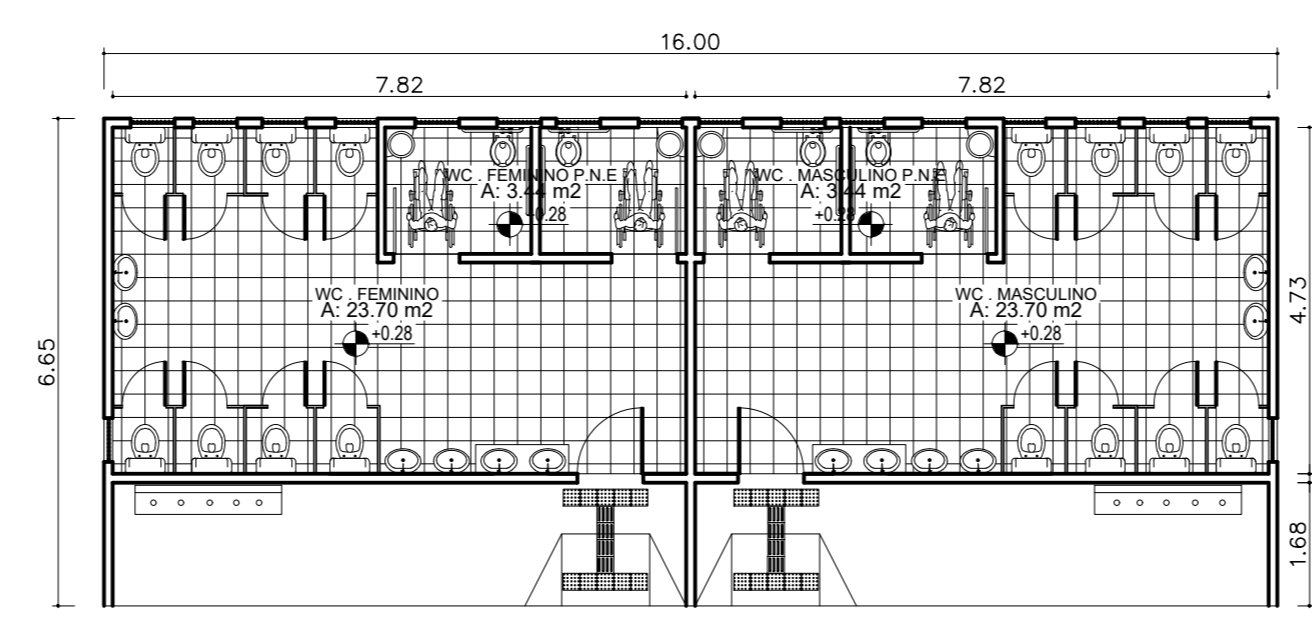
UNIVERSIDADE FEDERAL DO AMPÁ	
ARQUITETURA E URBANISMO	
Documento:	TRABALHO DE CONCLUSÃO DE CURSO
Aluno:	Fabiana Nascimento de Jesus
Orientador:	Gessica Nogueira dos Santos
Projeto:	Complexo Pavão
Conteúdo:	Mercado - Planta Baixa/Cortes/Cobertura/Elevações/Perspectivas
Área do lote:	15.419,00 m <sup>2</sup>
Autores:	AUTOR (A)
Data:	24 de janeiro de 2016
Escala:	1:150
02 / 03	



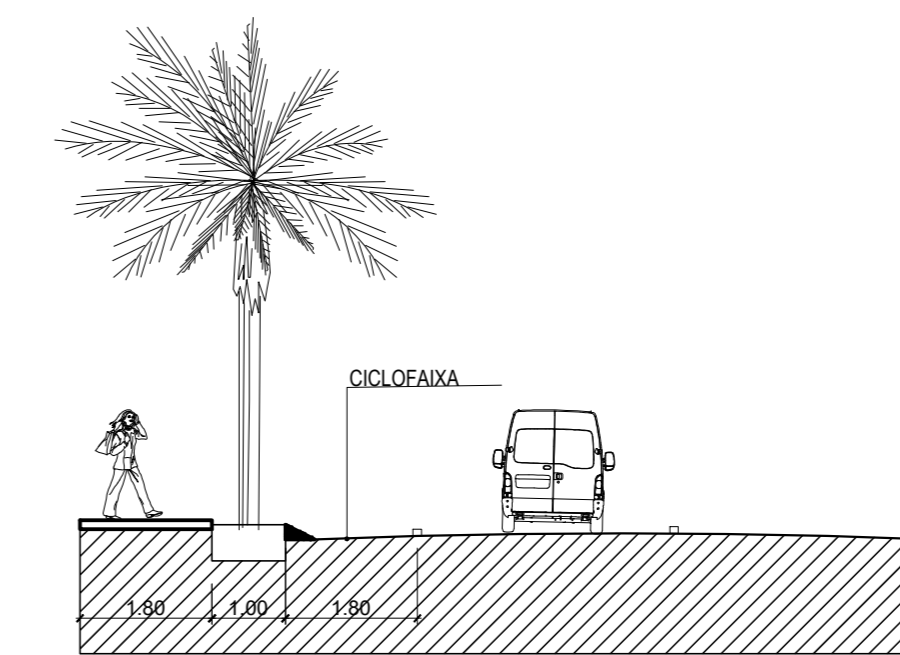
**RESTAURANTE**  
Escala 1/100



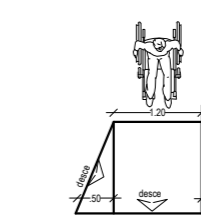
**SORVETERIA**  
Escala 1/100



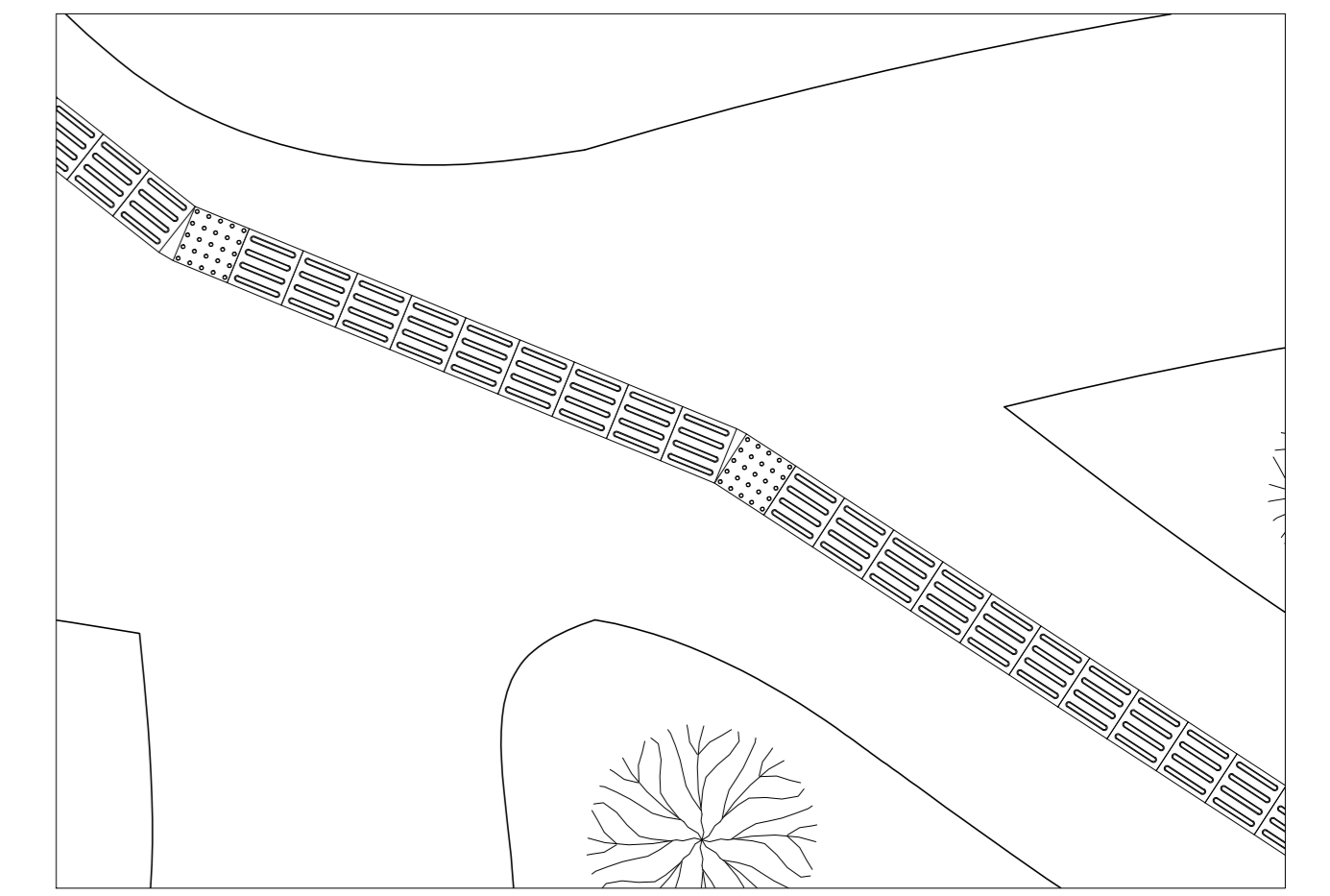
**BATERIA DE BANHEIROS**  
Escala 1/100



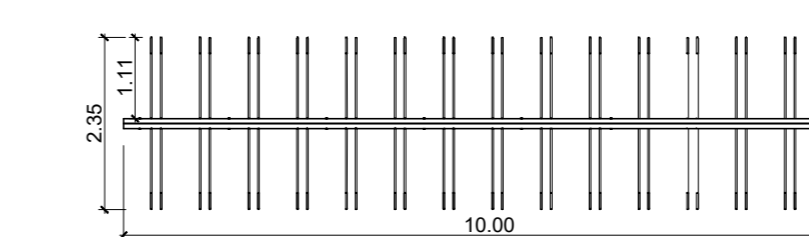
**ELEVAÇÃO DA CALÇADA / VIA**  
Escala 1/100



**DETALHES RAMPA**  
Escala 1/100



**DETALHES PISO TÁTIL**



**BICICLETÁRIO**  
Escala 1/100



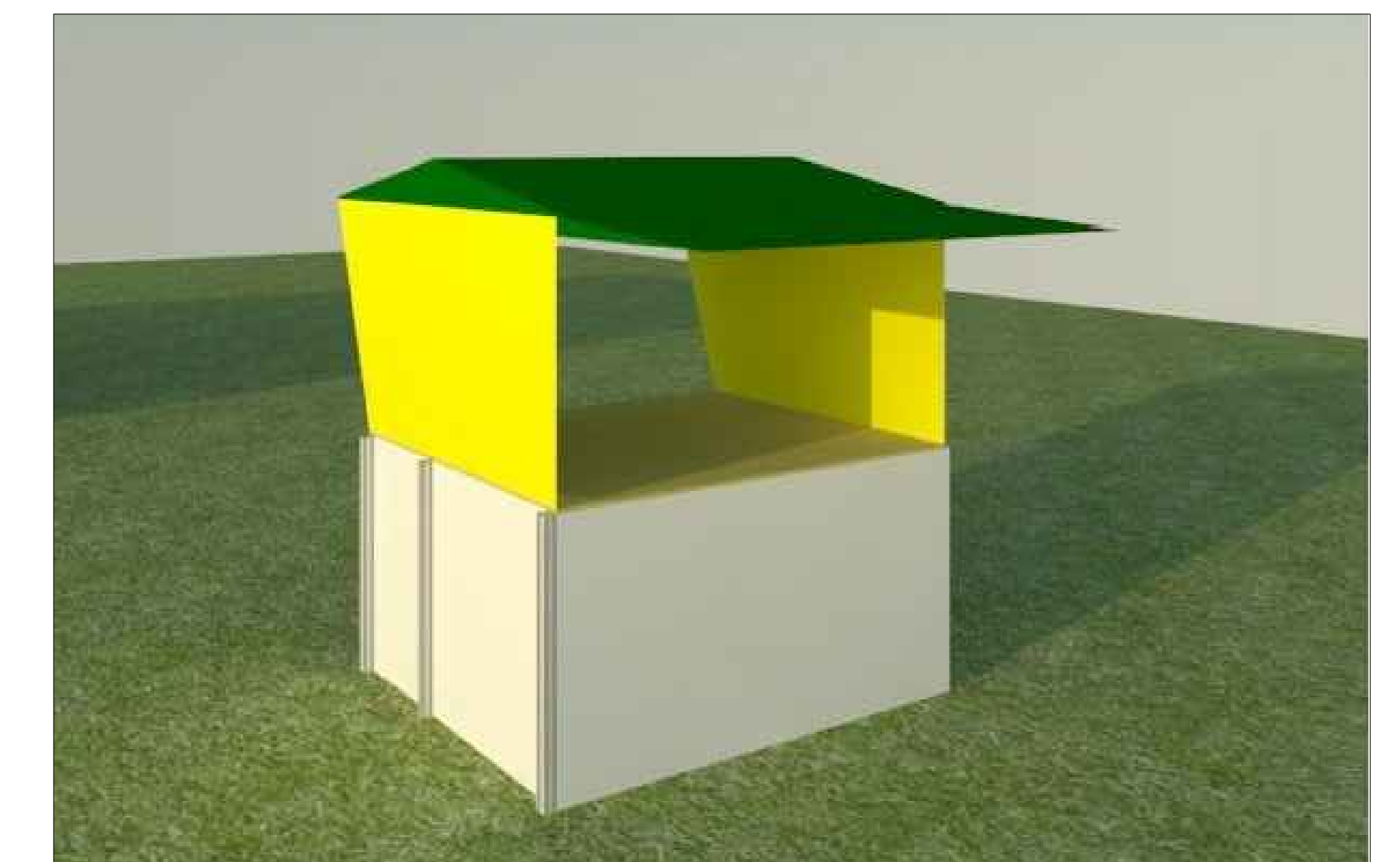
**RESTAURANTE**



**SORVETERIA**



**BATERIA DE BANHEIROS**



**BARRACA ARTESANATO / FEIRA**



**BANCOS DA PRAÇA**



**MESA COM BANCOS**